

♩ = 72

(Doc) SONS BOMBARDIER
matériau

1

Bombardier
Basse

CONTREFA

(p. 6: sons Cervejas)

8va B f o

02'18" → 02'23"

01'40" → 01'48"

01'04" → 07"

01'27" → 01'28"

03'35" → 03'41"

4'39" → 4'45"

4'50" → 4'58"

FA

FA CRESC 5'52" → 5'58"

6'18" → 6'25"

6'46" → 6'54"

FA FLATT CRESC 7'47" → 7'56"

FA FLATT CRESC 7'56" → 8'01" pp

8'34" → 8'42" FA FLATT CRESC

GLISS RÉ/Mi b 12'20"

11'19" → 11'26"

14'35" GLISS LA/DO

GLISS Mi SOL

GLISS Mi/SOL

GLISS LA/DO 17'15"

DBLE GLISS Mi/SOL 20'

DBLE GLISS Mi/SOL

1

22'49
+ enlaidure

25'20 26'16.6 26'45" 27'25"
idem fragile + enlaidure

27'34

29'42' 31'10"

RE/LA 31'50" → 31'55" 32'32' → 32'37" RE/LA → SI

32'40 → 32'48" LA ROULE 33'30"

MULTI LA

35'30" MULTI LA 36'14" → 36'27" multi-phrase

38'24" MULTI. LA 39'01" → 39'09" MULTI LA/MI

39'21" → 39'29" termine en Mi (couper le 39'47 = 39'20") MULTI LA/MI

40'04" ROULE Si b+ 40'16" 40'45" 40'57" DOIGT Si b

42'40" 43'20" → 27" MULTI Mi

GLISS RE → Do#
Ré → do#

3

Fiddle, live.
danc:

Handwritten musical notation on staves. Includes time signatures and notes with durations: 44' 07" → 08", 44' 56" → 58", 44' 59", 45' 11", 45' 18", 45' 20", 45' 22", 46' 15".

52' 58" tr

Handwritten musical notation circled in red. Includes a note with duration 53' 35" tr (acc.) and the word "accél." below it.

Handwritten musical notation circled in red. Includes a note with duration 54' 42" tr → 54' 52", a double bar line, and the word "pp" with a long horizontal line and a plus sign.

CLÉS bret. de clés 1

CLÉS 55' 27" []

CLÉS 55' 37" → 55' 46"

56' 01" CLÉS 56' 11"

57' 12" → 79"

58' 20" → 24"

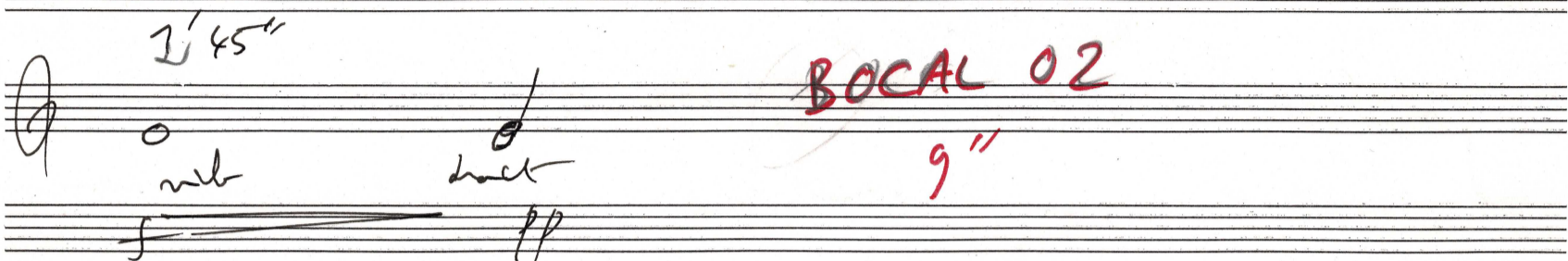
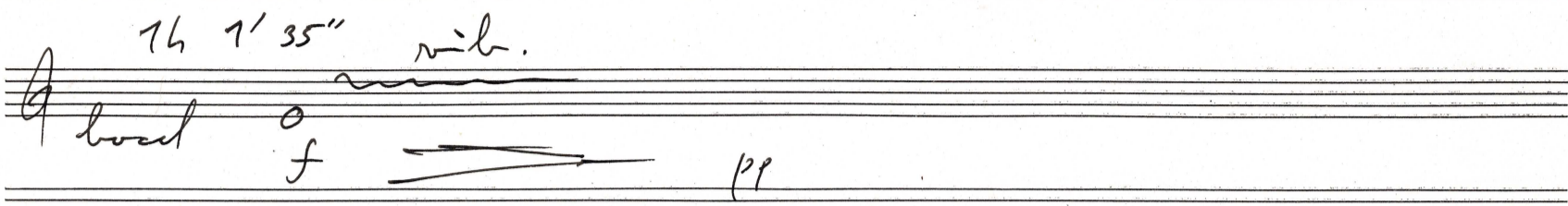
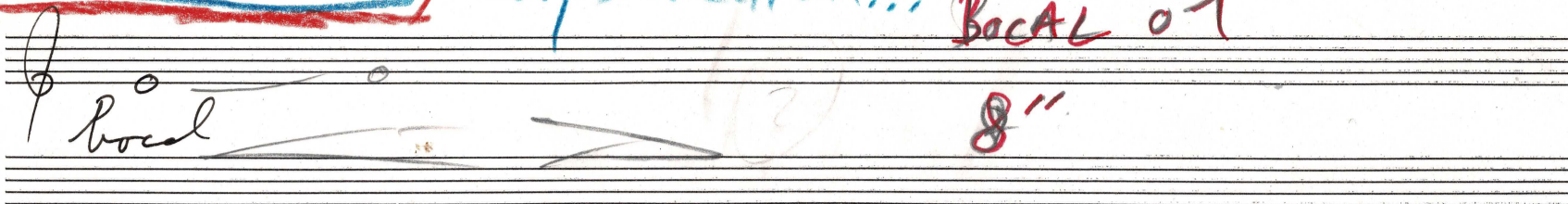
58' 56" → 59' 02"

3

BOMBARDE Bonne

SONS du Bocal, corps supérieur,
corps médian... BOCAL 01

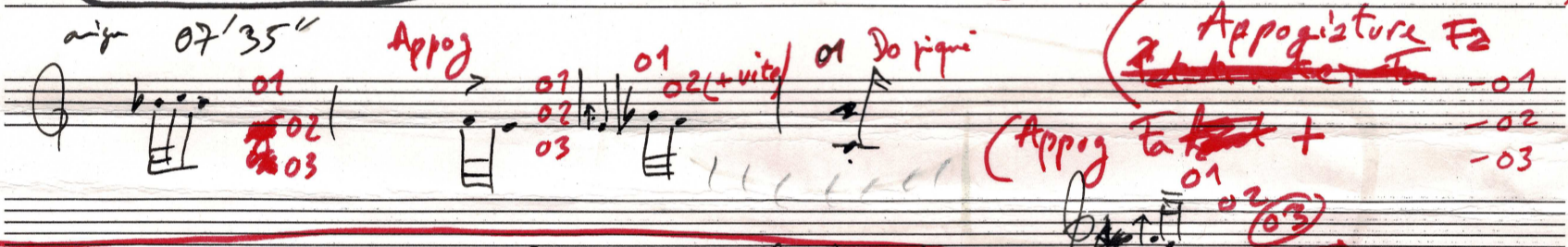
4



BOCAL 02
9"

(corps supérieur)

(CS MORDANT sib - 01
- 02
- 03) + vite
+ enroulé



Stable 12'35" CS MULTI pp tout bouche, + 2^e clef d'octave progressive

16'00 (+ stable) 01 02 03 Sib instable Sib inst. + tabouret

CS MULTI Sib stable 10" CS MULTI Sib stable PPP 11" CS MULTI Sib roulé grenu 14"

CS MULTI Sib ROLL 15" CS MULTI Sib ROLL 08" CS MULTI Sib ROLL 15"

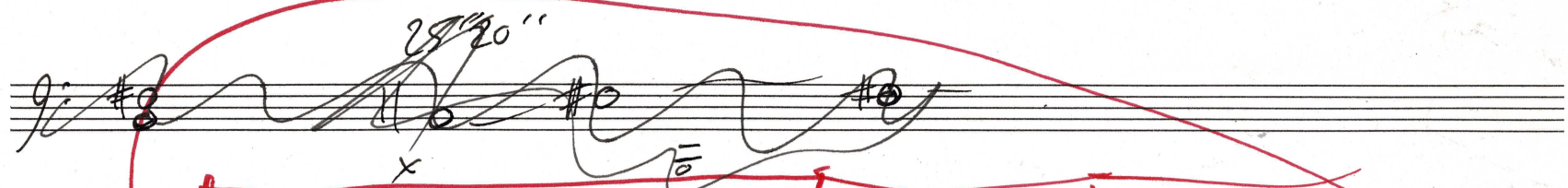
CS MULTI LA FA 01" CS MULTI MI-SI-LA 06" CS MULTI MI-SI-LA 10"

CS MULTI LA DO# SI 21" CS MULTI MI-SI-LA DO# 9"

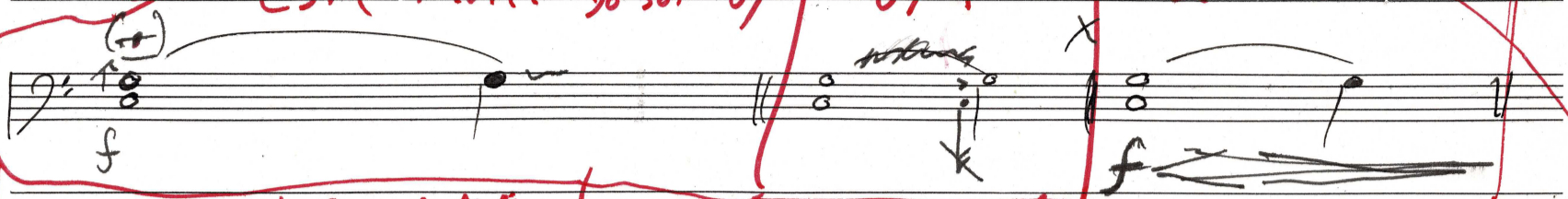
balayage CS MULTI Sib ROLL 14" CS MULTI Sib ROLL 15"

corps supérieur et écho 22'40" 23'20"

FIN CS MULTI MI-SI-LA 12" CS MULTI MI-SI-LA LA DO# 06"



CSM Multi Do sol 09" 09" 08"

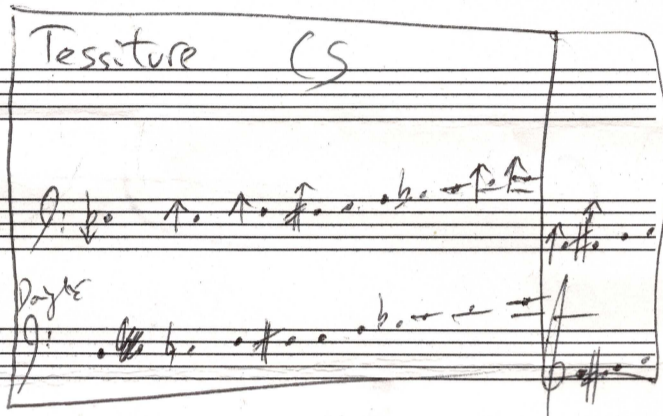
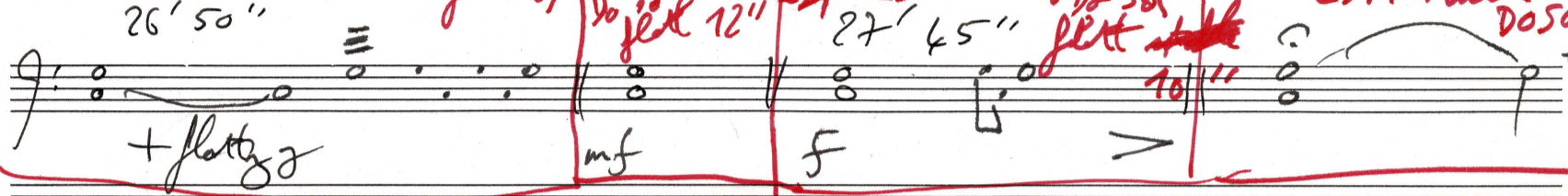


CSM Multi Do sol flat 09" 26' 50"

Do sol flat 12"

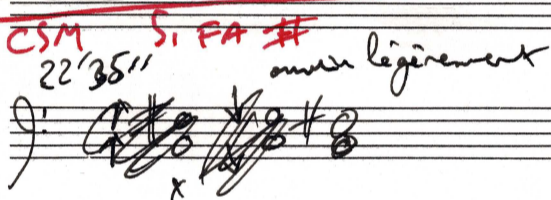
CSM Multi Do sol flat 10" 27' 45"

CSM Multi Do sol flat 11" 28' 50"



CORPS SUP + MÉDIAN

CSM MULTI SI FA#

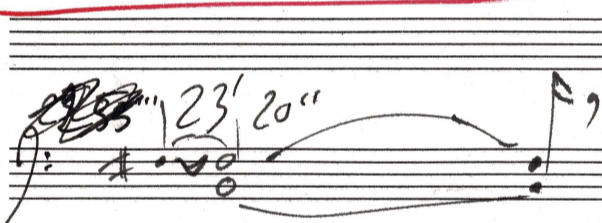


15"

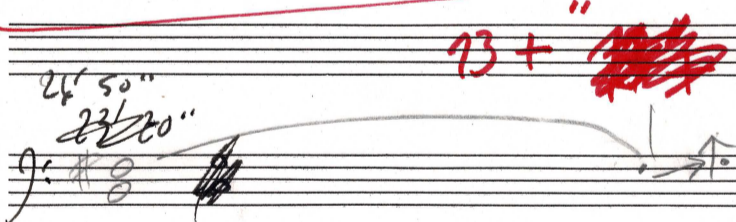
12"

22' 55"

+ soufflé

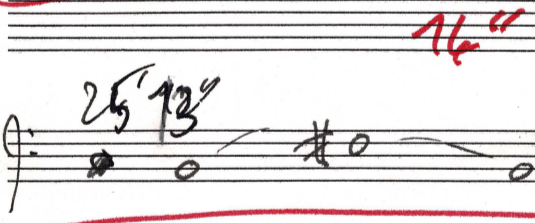


13"



13"

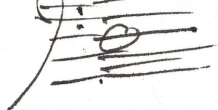
22' 55"



16"

5

28' 30" Urinal
30# cymbales
33' CERVELAS



6

"Fume" le bec du cerveau

CERVELAS 11"
bec.

CERVELAS Bec. 04"

CERVELAS 7"

Corps supérieur
seul

Δ + Fa dans tran.

Δ

6